

DuroGrit

Tomorrow's UV protection for your outdoors

DuroGrit is a sustainable, wood fibre fortified and water-soluble oil that colors and protects all exterior wood in 1 single layer. The FibreGrit Technology, where added wood fibers give the oil its unique structure, provides the perfect combination between a saturating and a breathable monocoat system.

Thanks to this technology, the product does not only have an incredible and long-lasting UV protection compared to other exterior wood finishing products, but it's also extremely durable and wear resistant.



PRODUCT INFORMATION

› Specific characteristics

- Suitable for all wood types
- 0% VOC (does not contain any organic solvents)
- Plant-based
- Fast-drying
- Maintains the natural look and feel of the wood
- Water and dirt-repellent
- Long-lasting weathering and UV protection thanks to the unique **FibreGrit Technology**
- Will not crack, peel or flake off
- Open pore structure which allows the wood to breathe and reduces swelling and shrinkage
- Only 1 layer needed
- Extra durable
- Strong mechanical resistance (also suitable for exterior furniture, decking, siding, doors, trim, etc.)
- Easy to maintain. No need for sanding!

› Technical characteristics

- Physical state at 68°F (20°C): liquid
- Odour: oily
- Density: 0.9 - 1.1 kg/L
- VOC content: 0 g/L
- Gloss level: matte
- QUV: tested according to the standard EN 927-6

DRYING TIME	1 to 3 hours
CURING TIME	3 days at 68°F (20°C)
APPLICATION INFORMATION	All vertical and horizontal exterior wood surfaces (e.g. decks, siding, garden furniture, ...)
ESTIMATED COVERAGE	80 to 150 ft ² /liter (8 to 15 m ² /liter)*

IDEAL WORKING TEMPERATURE	50 to 86 °F (10 to 30 °C)
WOOD MOISTURE CONTENT	18% MC or less
STORAGE/TRANSPORT	41 to 77°F (5 to 25°C) Protect against freezing!
SHELF LIFE	24 months
CLEANING OF TOOLS	Brushes and tools can be cleaned with water after use
DISPOSAL	Dispose of residue and empty packaging in accordance with local ordinances

** Standard spread rate is 80 to 150 ft²/liter (8 to 15 m²/liter), however consumption can vary a lot depending on your type of wood, weathering and preparation. Old wood, wood that has been left untreated outdoors or textured/rough sawn wood often absorbs more product. Therefore, always purchase slightly more product than for the recommended litre per ft² / m². You can use the leftover to maintain and touch up the surface with the same product. In exceptional cases, e.g. on very weathered or highly absorbing wood, consumption can be twice as high (even up to 60 ft²/liter or 6 m²/liter). In these cases, adding up to maximum 20% water can help control the spread rate.*

The Salt Lakes Collection

> Colors



UNTREATED WOOD



SUTTON GREY



ATACAMA GREY



TUZ WHITE



UTAH PINK



SALINAS BLUE



SALT LAKE GREEN



RUBIO MONOCOAT GREEN

The Great Plains Collection

> Colors



UNTREATED WOOD



GRASSLAND BEIGE



ROCKY UMBER



FOXY BROWN



STEPPE LOOK



BISON BROWN



CHARRED BLACK



SADDLE BLACK

The colors shown on pine are for reference only and are not binding. We recommend applying a color test sample first on identical sanded wood.

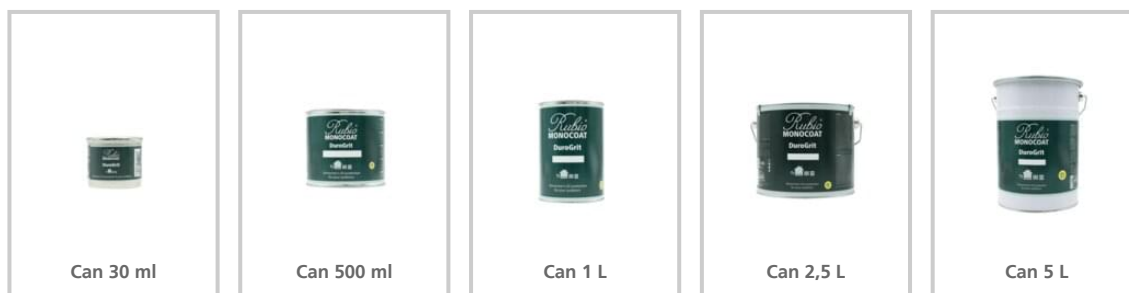
INFORMATIONAL

IMPORTANT

- For the best results, we advise staying as close to the natural look as possible. Going lighter than the natural color of the wood may shorten the durability of the protection. If you want to create a look that contrasts a lot with the natural color of the wood, please keep in mind that scratches may become more visible because of said contrast with the wood. This might happen especially on decking.
- The pigment present in the various DuroGrit colors helps protect the wood from greying.
 - *PLEASE NOTE: Although DuroGrit offers state-of-the-art UV protection, the result still depends on the chosen color and wood type. As a rule of thumb, the darker the color, the better the durability. Some wood types, especially thermally modified wood, are extremely sensitive to color change due to exposure to UV light. For these wood types we recommend using a dark color.*
- We advise to use the white and pastel colors on softwood only.
- The color Bison Brown was designed specifically for Thermowood. This color is not recommended for wood species with a light look.

	Pine	Douglas	Larch	Iroko	Teak	Thermo pine	Ipé	Cumaru
The Great Plains Collection								
Grassland Beige	Natural look	Natural look	Natural look		Natural look			
Rocky Umber	✓	✓	✓	✓	✓	Natural look	✓	Natural look
Foxy Brown	✓	✓	✓	Natural look	✓		Natural look	
Steppe Look	✓	✓	✓	✓	✓	✓	✓	✓
Bison Brown	✓	✓	✓	✓	✓	✓	✓	✓
Charred Black	✓	✓	✓		✓	✓		
Saddle Black	✓	✓	✓	✓	✓	✓	✓	✓
The Salt Lakes Collection								
Sutton Grey	✓	✓	✓		✓			
Atacama Grey	✓	✓	✓					
Tuz White	✓	✓	✓					
Utah Pink	✓	✓	✓					
Salinas Blue	✓	✓	✓					
Salt Lake Green	✓	✓	✓					
Rubio Monocoat Green	✓	✓	✓	✓	✓	✓	✓	✓

> Packaging



APPLICATION INFORMATION

> Instructions

On new wood

Step 1: We recommend allowing the new installed wood to weather outdoors for about 4-6 weeks (except oak)

- When this is not possible, sand the wood properly with 80 grit sandpaper for decking and siding, and up to 120 grit for furniture, windows and doors to open the wood pores.
- Allow already installed new wood or wood containing natural wood extractives (red cedar, afzelia, redwood, ...) and especially hardwood (ipé, teak, merbau, ...) to weather outdoors for about 4-6 weeks. This will allow the water-soluble substances to come out of the wood and will allow the wood to absorb the DuroGrit better.

Note: New, water-repellent pressure treated wood must be allowed to dry and weather for approximately 6-12 months before doing the surface preparation and coating.

Step 2: Clean the surface with Exterior Wood Cleaner and let it dry

- First wet the wooden surface with a fine mist of water from a garden hose.
- Clean the surface with Exterior Wood Cleaner and a stiff bristled nylon scrubbing brush (wear gloves and eye protection).
- Do not allow the solution to dry. Thoroughly rinse the cleaning solution residue with clean water until all foaming residue is rinsed away.
- Allow the surface to dry completely.

Step 3: Apply DuroGrit

- Only work in frost-free and dry conditions and avoid application of DuroGrit when rain is expected within 10 hours of application.
- Stir the product a few minutes before use.
- Apply the product evenly to the surface with a good quality, firm bristle paintbrush, suitable for waterborne coatings. Work in the direction of the wood installation, always covering the full length. For vertically installed boards, this means from top to bottom and for horizontally installed wood from left to right (or vice versa). So never stop in the middle of a board but only at a natural break (e.g. a seam, edge, staircase, etc.). Work in small sections of approximately 1 or 2 boards wide. Always apply sufficient product and brush again afterwards to avoid start/stop and brush marks (remember not to exert too much pressure on the brush).
 - *Tip: Maintain a wet edge to avoid lapmarks.*
 - *Errors created during application (start marks, brush marks, lapmarks, ...) can be touched up on the wet surface up to 15 minutes after application (depending on the weather conditions). Apply a little extra DuroGrit on the mark. Put some pressure on your brush so the product that has already been applied dissolves and mixes with the new one. Finally smooth out until you no longer have brush marks.*

Step 4: Let dry for 3 hours

- Let the surface dry for about 3 hours. Complete curing takes place after 3 days (at 68°F / 20°C).

- Keep in mind that low temperatures, poor ventilation and high relative humidity significantly slow down the drying and curing process.

In case of renovation on older non-Rubio Monocoat products

Step 1: Remove all residues of old applications

- Remove all residues of old applications by properly sanding the wood surface. End with 80 grit sandpaper for siding and decking, do not sand smoother. The smoother you sand, the less product can penetrate in the wood and the less intense the color (and protection) will be. For doors, windows, and furniture you may sand up to 120 grit.
 - If the wood surface is dirty, then first clean it with either water or Exterior Wood Cleaner (see step 2 for instructions). By removing dirt before sanding, the sandpaper won't get clogged up as quickly.

Step 2: Clean the surface with Exterior Wood Cleaner and let it dry

- Next, wet the wood surface with a fine mist of water.
- Clean the surface with Exterior Wood Cleaner and a stiff bristled nylon scrubbing brush (wear gloves and eye protection).
- Do not allow the solution to dry and thoroughly rinse off the cleaning solution residue with clean water until all foaming residue is rinsed away.
- Allow the surface to dry completely.

Step 3: Apply DuroGrit

- Only work in frost-free and dry conditions and avoid application of DuroGrit when rain is expected within 10 hours of application.
- Stir the product a few minutes before use.
- Apply the product evenly to the surface with the a good quality, firm bristle paintbrush, suitable for waterborne coatings. Work in the direction of the wood installation, always covering the full length. For vertically installed boards, this means from top to bottom and for horizontally installed wood from left to right (or vice versa). So never stop in the middle of a board but only at a natural break (e.g. a seam, edge, staircase, etc.). Work in small sections of approximately 1 or 2 boards wide. Always apply sufficient product and brush again afterwards to avoid start/stop and brush marks (remember not to exert too much pressure on the brush).
 - *Tip: Maintain a wet edge to avoid lapmarks.*
 - *Errors created during application (start marks, brush marks, lapmarks, ...) can be touched up on the wet surface up to 15 minutes after application (depending on the weather conditions). Apply a little extra DuroGrit on the mark. Put some pressure on your brush so the product that has already been applied dissolves and mixes with the new one. Finally smooth out until you no longer have brush marks.*

Step 4: Let it dry for 3 hours

- Let dry for about 3 hours. Complete curing takes place after 3 days (at 68°F / 20°C).

- Keep in mind that low temperatures, poor ventilation and high relative humidity significantly slow down the drying and curing process.

> Industrial application

If you want to apply this product in an industrial manner, we advise you to get in contact with our technical care team.

› Maintenance Instructions

Cleaning instructions

Regular cleaning can be done with Exterior Soap (Ecospray). Do not use any other cleaning products or detergents as these might affect the protection!

Maintenance instructions

In general we recommend a yearly visual check-up just after winter season.

Please check for the presence of the following two points:

- a. Dirt & green deposits; clean with low pressure water and a soft brush or use Exterior Soap (consult Technical Data Sheet before use)
- b. Fading of colors

If necessary (concerning point b) apply a maintenance coat according to the instructions. First clean the wood surface with Exterior Wood Cleaner, then apply a layer of DuroGrit in the original color. Depending on the degree of fading of the color, dilute DuroGrit with maximum 20% water to avoid applying too much product and making the color too opaque.

The frequency of maintenance depends on the weather conditions, sun exposure, geographic situation, wood type (softwood vs hardwood) and color. In normal weather conditions:

- Vertical surfaces: every 3-5 years
- Horizontal surfaces: up to 2 years

> Tips & tricks

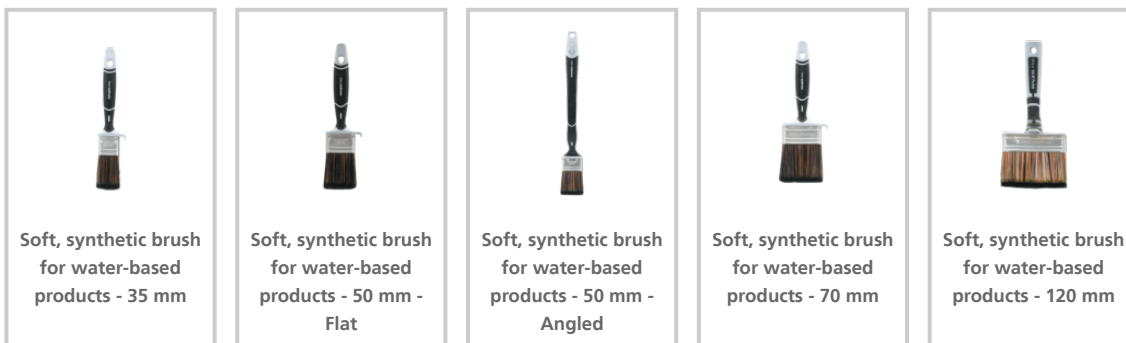
- To determine the desired color, always do a small test first with one of our color samples on identically sanded and prepared wood.
- A good preparation is crucial for good protection. Always prepare the wood with Exterior Wood Cleaner, including if the wood is new.
- Stir the product well before application. When using several containers at one site, it is recommended to mix them for an even result.
- Avoid direct hot sunlight on the surface during application and only work in frost-free conditions and when weather conditions are dry.
- In case of rough/weathered wood, highly absorbent woods or for deck application, you can add up to maximum 20% water to DuroGrit for easier spreading of the product.
- Do not cover and do not place heavy objects on the surface until it is completely cured.
- Only use our maintenance and cleaning products.
- Our products are developed with environmentally friendly ingredients. However, some people can be allergic to certain elements. Therefore, we advise wearing gloves during application to protect your skin.
- If needed, tape of anything that should not be treated, splashed, or spilled on.
- The product can also be applied with a spray gun.

INFORMATIONAL

Adhesion according to DIN EN ISO 2409: classification 0

DuroGrit was tested for its scratch resistance with a cross-cut tester. The classifications for this test range from 0 (excellent) to 5 (poor) and we achieved the highest rating (classification 0). This positive evaluation of the test confirms that no product was detached from the surface and that the coating remained intact.

> Tools



> Certificates



Check the packaging and the safety data sheet for more details.

For our complete assortment of products for the protection and colouring of interior and exterior wood, please visit www.rubimonocoatusa.com

LIABILITY: It is the user's responsibility to establish, through his own tests, whether the product is suitable for the chosen application. In no case can Muylle Facon NV be held liable for any consequential damage. The information above may be subject to changes, which will be published in the updated versions of the technical data sheet. We cannot be held liable for poor results due to causes that are not related to the quality of the product. This technical information has been drawn up based on the currently available information and knowledge. The most recent technical data sheets can be requested or are available on the website.

Date of TDS: 14/11/2024. Check the safety information before using the product.



Rubio[®] MONOCOAT

MUYLLE  FACON

Muylle Facon NV
Ambachtenstraat 58
8870 Izegem (BELGIE)

Tel. +32 (0) 51 30 80 54
Fax +32 (0) 51 30 99 78
info@muyllefacon.be

www.rubimonocoat.com