

## DuroGrit

Tomorrow's UV protection for your outdoors

DuroGrit is a sustainable, wood fibre fortified and water-soluble oil that colours and protects all exterior wood in 1 single layer. The FibreGrit Technology, where added wood fibers give the oil its unique structure, provides the perfect combination between a saturating and a breathable monocoat system.

Thanks to this technology, the product does not only have an incredible and long-lasting UV protection compared to other exterior wood finishing products, but it's also extremely durable and wear resistant.



### PRODUCT INFORMATION

#### › Specific characteristics

- Suitable for all wood types
- 0% VOC (does not contain any organic solvents)
- Plant-based
- Fast-drying
- Maintains the natural look and feel of the wood
- Water and dirt repellent
- Long-lasting weathering and UV protection thanks to the unique **FibreGrit Technology**
- Will not crack, peel or flake off
- Open pore structure which allows the wood to breathe and reduces swelling and shrinkage
- Only 1 layer needed
- Extra durable
- Strong mechanical resistance (also suitable for exterior furniture, decking, etc.)
- Easy to maintain. No need for sanding!

#### › Technical characteristics

- Physical state at 20°C (68°F): liquid
- Odour: oily
- Density: 0.9 - 1.1 kg/L
- VOC content: 0 g/L
- Gloss level: matt
- QUV: tested according to the standard EN 927-6

<b>DRYING TIME</b>	1 to 3h
<b>CURING TIME</b>	3 days at 20°C (68°F)
<b>APPLICATION INFORMATION</b>	All vertical and horizontal wooden surfaces outdoors (e.g. terraces, cladding, garden furniture, ...)
<b>ESTIMATED COVERAGE</b>	8 to 15 m <sup>2</sup> /litre*

<b>APPLICATION TOOLS</b>	Brush or spraygun
<b>WORKING TEMPERATURE</b>	10 to 30 °C (50 to 86°F)
<b>WOOD MOISTURE CONTENT</b>	Min 12% - Max 18%
<b>STORAGE/TRANSPORT</b>	5 to 25°C (41 to 77°F)
<b>SHELF LIFE</b>	24 months
<b>CLEANING OF TOOLS</b>	Clean tools and equipment immediately after each use with mild soap (or Exterior Wood Cleaner) and water
<b>DISPOSAL</b>	Dispose of residue and empty packaging in accordance with local ordinances

*\* Standard spread rate is 8-15 m<sup>2</sup>/litre, however consumption can vary a lot depending on your type of wood, weathering and preparation. Old wood, wood that has been left untreated outdoors or grooved wood often absorbs more product. Therefore, always purchase slightly more product than for the recommended litre per m<sup>2</sup>. You can use the leftover to maintain and touch up the surface with the same product. In exceptional cases, e.g. on very weathered or highly absorbing wood, consumption can be twice as high (even up to 6 m<sup>2</sup>/litre). In these cases, adding up to maximum 20% water can help control the spread rate.*

The Salt Lakes Collection

> Colours



UNTREATED WOOD



SUTTON GREY



ATACAMA GREY



TUZ WHITE



UTAH PINK



SALINAS BLUE



SALT LAKE GREEN



RUBIO MONOCOAT GREEN

## The Great Plains Collection

### > Colours



UNTREATED WOOD



GRASSLAND BEIGE



ROCKY UMBER



FOXY BROWN



STEPPE LOOK



BISON BROWN



CHARRED BLACK



SADDLE BLACK

The colours shown on pine are for reference only and are not binding. We recommend doing a test on identical sanded wood.

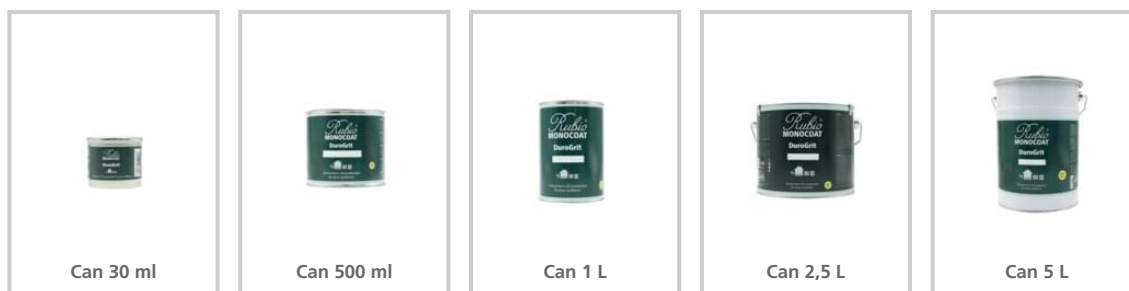
## INFORMATIONAL

### IMPORTANT

- For optimal results, we recommend applying a DuroGrit colour as close to the natural wet appearance as possible. Use a DuroGrit colour fan or apply DuroGrit to a piece of softwood. Wet the wood to be treated and compare its colour to the fan to find the closest match to the wet appearance. Choosing a lighter colour than the natural wet look may reduce the longevity of the protection. Darker colours offer better durability.
- If you aim to create a look that significantly contrasts with the natural wet look of the wood (either much darker or much lighter), scratches may become more noticeable due to this contrast. This is particularly likely to occur on decking.
- Thermally modified wood is extremely sensitive to colour change due to exposure to UV light. For these wood types we recommend only using a dark colour ("Rocky Umber" or "Bison Brown" are especially developed for Thermowood).
  - *Note: "Bison Brown" is not recommended for wood species with a light look.*
- We advise to use the white and pastel colours on softwood only.
- We do not recommend mixing DuroGrit colours. These new combinations may not provide the same durable protection as our standard colours and may fade more quickly. Since these mixtures have not been tested in our laboratory for durability, we cannot guarantee their performance.

	Pine	Douglas	Larch	Iroko	Teak	Thermo pine	Ipé	Cumarú
<b>The Great Plains Collection</b>								
Grassland Beige	Natural look	Natural look	Natural look		Natural look			
Rocky Umber	✓	✓	✓	✓	✓	Natural look	✓	Natural look
Foxy Brown	✓	✓	✓	Natural look	✓		Natural look	
Steppe Look	✓	✓	✓	✓	✓	✓	✓	✓
Bison Brown	✓	✓	✓	✓	✓	✓	✓	✓
Charred Black	✓	✓	✓		✓	✓		
Saddle Black	✓	✓	✓	✓	✓	✓	✓	✓
<b>The Salt Lakes Collection</b>								
Sutton Grey	✓	✓	✓		✓			
Atacama Grey	✓	✓	✓					
Tuz White	✓	✓	✓					
Utah Pink	✓	✓	✓					
Salinas Blue	✓	✓	✓					
Salt Lake Green	✓	✓	✓					
Rubio Monocoat Green	✓	✓	✓	✓	✓	✓	✓	✓

### > Packaging



## APPLICATION INFORMATION

### › Instructions

#### PREPARATION

##### New wood

New smooth, planed wood has a hard, shiny surface called mill glaze, which prevents maximum penetration and adhesion of DuroGrit. To ensure optimal performance, this glaze must be removed. Clean the new wood with Exterior Wood Cleaner (check TDS before use) to break the mill glaze and allow proper penetration of DuroGrit.

- For (tropical) hardwoods (such as afzelia, iroko, cumaru, etc.), let the wood weather outdoors for about 4-6 weeks before surface preparation and coating. These species contain natural extractives or oils that can impede the penetration and/or drying of the finish.
- New, water-repellent pressure-treated wood must be allowed to dry and weather for approximately 6-12 months before surface preparation and coating.

If using Exterior Wood Cleaner and/or natural weathering is not possible, properly sand the wood with 80-grit sandpaper for decking and siding, and up to 120-grit for furniture, windows, and doors to break the mill glaze and open the wood pores.

##### Untreated weathered wood

Thoroughly clean the surface with Exterior Wood Cleaner (refer to the TDS before use) to remove dirt and green deposits, and to open the wood pores. If the weathering is severe and the surface still appears patchy after cleaning, we recommend sanding the wood with 80-grit sandpaper for decking and siding, and up to 120-grit for furniture, windows, and doors to achieve a more uniform appearance.

##### Renovation of older non-Rubio Monocoat coatings

Old surface coatings should be completely removed by sanding or chemical stripping before application. If sanding, finish with 80-grit sandpaper for siding and decking; for doors, windows, and furniture, you may sand up to 120-grit. Avoid sanding smoother, as smoother surfaces allow less product penetration, resulting in less intense colour and protection.

After sanding, clean the surface with Exterior Wood Cleaner (refer to the TDS before use).

##### Renovation of Hybrid Wood Protector coated surfaces

Although Hybrid Wood Protector and DuroGrit are compatible in terms of adhesion, you must remember that DuroGrit is a transparent finish. This means any spots where the old Hybrid Wood Protector coating remains will still be visible. Additionally, not all Hybrid Wood Protector colours have matches in DuroGrit. In that case, it is best to completely remove the old Hybrid Wood Protector coating before applying DuroGrit.

**Water-test:** After the surface preparation (sanding or Exterior Wood Cleaner), allow the wood to thoroughly dry. To test readiness, sprinkle a few drops of water on the wood. The water should soak in within a few seconds. If it doesn't, do not apply the finish, as the wood is either not dry enough or not porous enough to accept the finish correctly.

## BRUSH APPLICATION

- Before starting application, test your colour choice on a small area. Allow to dry to determine a final colour
- Only apply DuroGrit between 10°C (50°F) and 30°C (86°F) and in dry weather conditions
- Avoid application in direct sunlight or to hot surfaces
- Avoid application of DuroGrit when rain is expected within 10 hours of application
- If needed, tape off anything that should not be treated, splashed or spilled on, or anything sensitive to overlaps

- Stir the product thoroughly for a few minutes before use.
- Apply a generous coat of DuroGrit and distribute evenly to the surface using a high-quality, firm bristle paintbrush suitable for waterborne coatings. A hybrid brush (mix of natural and synthetic bristles) is recommended for best results.
- Work in the direction of the wood installation, ensuring to cover the full length of each deck board or cladding. For vertically installed boards, apply from top to bottom; for horizontally installed wood, apply from left to right (or vice versa).
- Work in small sections approximately 1 or 2 boards wide.
- Avoid stopping in the middle of a board; use natural breaks as boundaries to divide large areas into smaller, more manageable sections.
- Keep the leading edge wet.
- Allow to dry for approximately 3 hours. Complete curing occurs after 3 days (at 68°F / 20°C). For deck stain applications, allow 3 hours for light foot traffic under normal weather conditions, but wait 3 days before replacing furniture and resuming normal use.
- Note that low temperatures, poor ventilation, and high relative humidity significantly prolong the drying and curing process.

### Pro-tip for a Smooth Finish with DuroGrit

Apply Generously for Best Results: When applying DuroGrit, ensure you use a generous amount of product. Insufficient application can cause the oil to dry too quickly, resulting in more visible brush marks and noticeable start/stop lines. Using more product extends the working time, reducing sensitivity to overlaps and improving the overall flow. This approach leads to a smoother finish with fewer brush marks.

## SPRAY APPLICATION

- DuroGrit can also be applied via spraying methods such as HVLP, Airless, or Airmix. Back brushing is not required.
- Use the standard DuroGrit version for brush application, manual spraying, and the industrial version for spraycoaters or vacuum coater applications or for manual spraying in indoor environments (see TDS Industrial DuroGrit, contact our Technical Service Team before use).
- Dilution is typically not necessary. However for the colours of the Great Plains Collection adding 20% of water will ensure a more uniform spray pattern and make spraying easier. The colours of the Salt Lake Collection are more covering and usually don't require dilution. Keep in mind if you dilute, that the final coating grammage must then also be higher.



- Avoid spraying on windy or breezy days to prevent overspray from reaching nearby structures, vehicles, windows, stonework, or furniture, as it can be challenging to remove if not addressed promptly. Consider waiting for calmer weather conditions.
- Use cardboard or spray shields to help manage overspray.
- When using an airless sprayer:
  - Select fine finish tips between 010 (0.010") and 012 (0.012")
  - Use the lowest pressure that achieves a uniform spray pattern to minimise fogging and overspray (typically between 50 to 120 bar). Adjust pressure as needed.
  - Utilise filters between 50-100 mesh

## INDUSTRIAL APPLICATION

If you want to apply this product in an industrial manner, we advise you to get in contact with our Technical Service Team.

## WHEN AND HOW TO DILUTE DUROGRIT?

Only dilute with water or Open Time Extender to adjust open time or characteristics. Never add other paints, stains or solvents.

<b>Very rough/ weathered, highly absorbent wood types</b>	Up to <b>20%</b> water	If the oil soaks in quickly and the wood seems thirsty, dilute with 20% water. This will help to control the spread rate. In exceptional cases a second layer may be necessary for aesthetic reasons. The first coat acts as a primer, but due to the wood's high and uneven absorption, a second coat will ensure a more uniform colour result. In such situations we recommend diluting DuroGrit with 20% in both layers.
<b>Decking application</b>	Up to <b>20%</b> water	Adding 20% water for decking application can help improve spreadability.
<b>Spray application</b>	Up to <b>20%</b> water	Optional, to have a more uniform spray pattern.
<b>Maintenance coat</b>	Up to <b>40%</b> water	Adding water when applying a maintenance coat prevents changing the original colour too much.
<b>Hot temperatures</b>	Up to <b>10%</b> Open Time Extender	In very high temperatures (+30°C / +86°F), you can add 10% Open Time Extender to extend the open work time and prevent overlaps. Avoid using Open Time Extender in low temperatures, as this additive significantly prolongs the overall curing time.

## › Maintenance Instructions

### Cleaning instructions

Regular cleaning can be done with Exterior Soap (Ecospray) or All Natural Wood Cleaner (Spray). Do not use any other cleaning products or detergents as these might affect the protection!

### Maintenance instructions

In general we recommend a yearly visual check-up just after winter season.

Please check for the presence of the following two points:

- a. Dirt & green deposits; clean with low pressure water and a soft brush or use Exterior Soap/All Natural Wood Cleaner (consult Technical Data Sheet before use)
- b. Fading of colours

If necessary (concerning point b) apply a maintenance coat according to the instructions. First clean your wood with Exterior Wood Cleaner, then apply a layer of DuroGrit in the original colour. Depending on the degree of fading of the colour, dilute DuroGrit with maximum 40% water to avoid applying too much product and making the colour too opaque.

- *Unevenly weathered surface?* First repair localised areas by applying DuroGrit undiluted. Then apply a second layer over the entire surface, diluted with 20-40% depending on the condition.
- *Too weathered?* Sand the surface and re-apply DuroGrit.

The frequency of maintenance depends on the weather conditions, exposure, geographical situation, solar orientation, wood type (softwood vs hardwood) and colour. In normal weather conditions:

- Vertical surfaces: every 5-10 years
- Horizontal surfaces: up to 2 years

NOTE: Extractive tannin bleed is not caused by the coating and does not indicate coating failure. Tannin-containing woods, such as oak, chestnut, redwood, red cedar, mahogany, Douglas fir, etc., naturally contain tannic acid, which can migrate to the surface and cause discolouration of the finish. This discolouration is typically harmless and can often be removed by cleaning with Tannin Remover. Apply the remover to the affected area, let it sit for a few minutes, and then thoroughly rinse with clean water.

### › Tips & Tricks

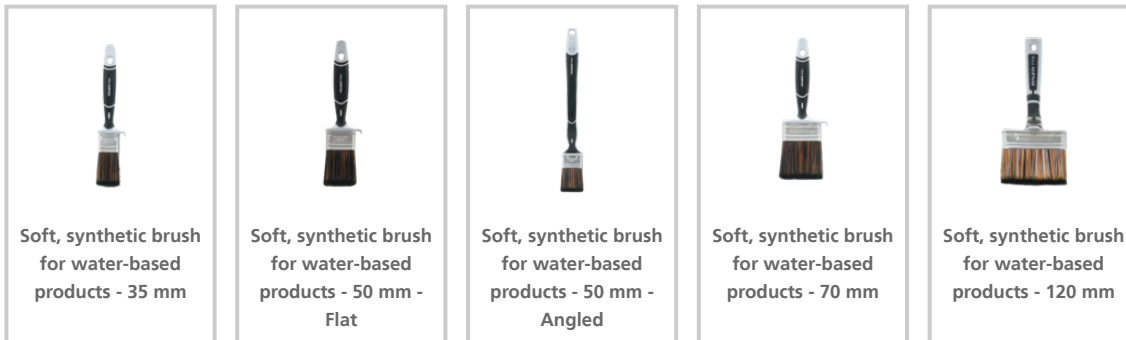
- To determine the desired colour, always do a small test first with one of our samples on identically sanded and prepared wood.
- Stir the product well before application. When using several containers at one site, it is recommended to mix them for an even result.
- Do not cover and do not place heavy objects on the surface until it is completely cured.
- Only use our maintenance and cleaning products.
- Our products are developed with environmentally friendly ingredients. However, some people can be allergic to certain elements. Therefore, we advise wearing gloves during application to protect your skin.

### INFORMATIONAL

Adhesion according to DIN EN ISO 2409: classification 0

DuroGrit was tested for its scratch resistance with a cross-cut tester. The classifications for this test range from 0 (excellent) to 5 (poor) and we achieved the highest rating (classification 0). This positive evaluation of the test confirms that no product was detached from the surface and that the coating remained intact.

### › Tools



### › Certificates



Check the packaging and the safety data sheet for more details.

For our complete assortment of products for the protection and colouring of interior and exterior wood, please visit [www.rubimonocoat.com](http://www.rubimonocoat.com)

**LIABILITY:** It is the user's responsibility to establish, through his own tests, whether the product is suitable for the chosen application. In no case can Muylle Facon NV be held liable for any consequential damage. The information above may be subject to changes, which will be published in the updated versions of the technical data sheet. We cannot be held liable for poor results due to causes that are not related to the quality of the product. This technical information has been drawn up based on the currently available information and knowledge. The most recent technical data sheets can be requested or are available on the website.

**Date of TDS: 14/11/2024. Check the safety information before using the product.**



# Rubio<sup>®</sup> MONOCOAT

MUYLLE  FACON

**Muylle Facon NV**

Ambachtenstraat 58  
8870 Izegem (BELGIUM)

Phone +32 (0) 51 30 80 54

Fax +32 (0) 51 30 99 78

info@muyllefacon.be

[www.rubimonocoat.com](http://www.rubimonocoat.com)